

Specification Sheet



Product Introduction

Since from the beginning, ALT's products are named by the constellations, which represents that the brightness of ALT products are as shining as those stars. This also applies to the products' ancillary applications. Its conversion efficiency are bright and shining in the lighting industry. LED lighting is 100% environmentally friendly and energy saving product. ALT products the best alternative for replacing the traditional light source, and its energy saving effect can reached up to more than 60%.

ALT using the aerospace grade technology for Industrial Server applied on to the LED lighting products as well as some of its related accessories, such as the safe and stable power conversion efficiency, almost full compatibility with all commercial transformers in the market, especially passed related certification tests. It outstands, other than the ALT product function itself, the stringent requirements on Safety as corporate. Regarding to the efficiency conversion, power factor, product lifespan,etc., they all come with brilliant performance. To collocate with ALT product applications, it would be easier to achieve the environmental protection concept of energy saving and carbon reduction. Let's do our best, hand-in-hand, for global environment optimization.

Certificates



(ongoing)



Features

- ✓ Led Bulb Driver.
- ✓ Better Conversion Efficiency.
- ✓ High Reliability.
- ✓ Pass Burn-in Test.

Application

- ✓ LED Indoor lighting.
- ✓ Illumination Lighting.
- ✓ Boutique Lighting.
- ✓ Shop Lighting.
- ✓ Commercial Lighting.



100W Driver Specification

Type	APT-100-30	APT-100-36	APT-100-42	
Output	Voltage	30V	36V	42V
	Rated Current	3.33A	2.78A	2.38A
	Constant Current Range	15~30V	18~36V	21~42V
	Power Consumption	100W		
Input	Voltage Range	100~277V AC		
	Frequency Range	47~63Hz		
	Efficiency	92%		
	Power Factor	PF>0.98/115VAC,PF>0.95/230VAC,PF>0.93/277VAC,PF>0.92/305VAC		
Protection	Over Voltage	34~38V	41~46V	47~53V
Environment	Operating Temperature	-25 ~ +40°C		
Certification	Certification	CE (ongoing), LVD (ongoing), ETL , IP68		

120W Driver Specification

Type	APT-120-30	APT-120-36	APT-120-42	
Output	Voltage	30V	36V	42V
	Rated Current	4A	3.33A	2.86A
	Constant Current Range	15~30V	18~36V	21~42V
	Power Consumption	120W		
Input	Voltage Range	100~277V AC		
	Frequency Range	47~63Hz		
	Efficiency	92%		
	Power Factor	PF>0.98/115VAC,PF>0.95/230VAC,PF>0.93/277VAC,PF>0.92/305VAC		
Protection	Over Voltage	34~38V	41~46V	47~53V
Environment	Operating Temperature	-25 ~ +40°C		
Certification	Certification	CE (ongoing), LVD (ongoing), ETL , IP68		

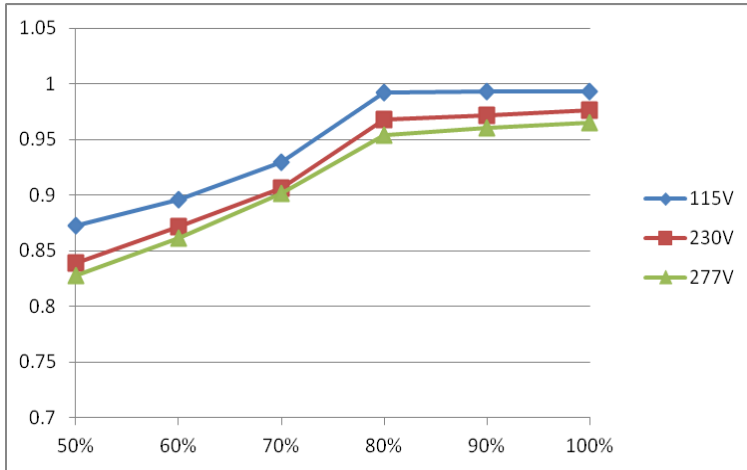
150W Driver Specification

Type	APT-150-30	APT-150-36	APT-150-42	
Output	Voltage	30V	36V	42V
	Rated Current	5A	4.17A	3.57A
	Constant Current Range	15~30V	18~36V	21~42V
	Power Consumption	150W		
Input	Voltage Range	100~277V AC		
	Frequency Range	47~63Hz		
	Efficiency	90%		
	Power Factor	PF>0.98/115VAC,PF>0.95/230VAC,PF>0.93/277VAC,PF>0.92/305VAC		
Protection	Over Voltage	34~38V	41~46V	47~53V
Environment	Operating Temperature	-25 ~ +40°C		
Certification	Certification	CE (ongoing), LVD (ongoing), ETL , IP68		

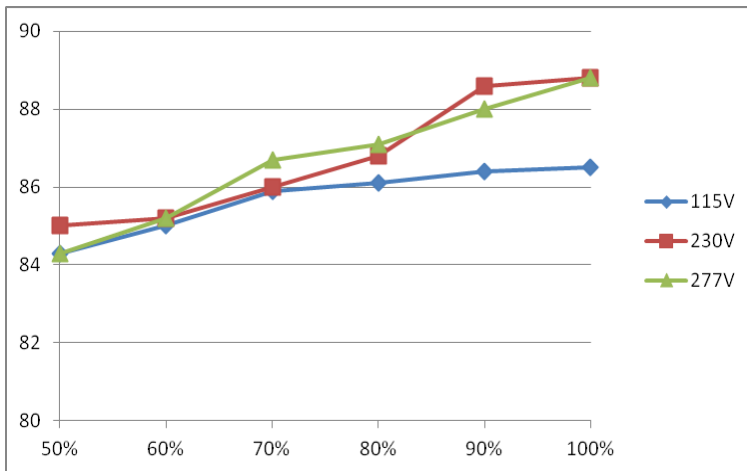
300W Driver Specification

Type	APT-300-30	APT-300-36	APT-300-42	
Output	Voltage	30V	36V	42V
	Rated Current	9A	7.5A	6.43A
	Constant Current Range	15~30V	18~36V	21~42V
	Power Consumption	270W		
Input	Voltage Range	100~277V AC		
	Frequency Range	47~63Hz		
	Efficiency	90%		
	Power Factor	PF>0.98/115VAC,PF>0.95/230VAC,PF>0.93/277VAC,PF>0.92/305VAC		
Protection	Over Voltage	34~38V	41~46V	47~53V
Environment	Operating Temperature	-25 ~ +40°C		
Certification	Certification	CE (ongoing), LVD (ongoing) , IP68		

Power Factor Characteristic



Efficiency vs Load



Compatible ALT Product List

Compatible List			
Product	Photo	Watts	Qty
F02 T100		92W	1
F02 T150		145W	1
F02 T300		285W	1

Mechanical Dimensions

